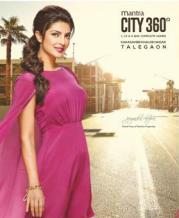


Mantra CITY 360°

1.15 to 2.56 COMPLETE LIVING
KURASIKKAL ROAD, TALEGAON



Location Map



in coll.
SHALDE
BROTHERS

Complete Living Gets A Whole New Meaning

Mantra Properties is an equal opportunity employer. Minor differences exist. The location shown on satellite map may differ with the actual location. The information and data are for reference only and should not be used as a basis for any financial decision.

mantra CITY 360°

1.15 to 2.56 COMPLETE LIVING
& HEALTHY LIVING

It would be quite boring if it were

an abandoned or incomplete, but all the various facets and dimensions that make life so much more exciting, a complete experience full of life.

That's exactly what Mantra City 360° offers - a multi-faceted, multi-dimensional life that equates a new meaning to 'Complete Living'. From convenience to luxury, from accessibility to safety, from amenities to special features, from the floor plan to the landscaping, everything is thought of from all angles and is complete in every sense.

But beyond, the Mantra City 360° is thoroughly complete in the truest sense of the word.

Project Details

- Located in Talegaon on the Pune-Mumbai Highway
- Area ranging from 100 to 1000 sq. ft.
- 1000+ homes in Talegaon 360°, Spreaded 17 acres, Westward IT Park and Cluster 4000.



Complete Living Amenities

- Swimming Pool
- Gymnasium
- Kids Zone
- Multipurpose Hall
- Children's Play Area
- Multipurpose Sports Court
- Indoor Games Room

Salient Features

- Traffic free zone
- Access to Talegaon MIDC
- Connected to Mumbai Pune Expressway
- Pollution free environment
- Green landscape
- Modern utility shops comprising of gas, water, electric, internet, repair shops, bank, coffee shop, clothes, jewelry and quick service restaurant.